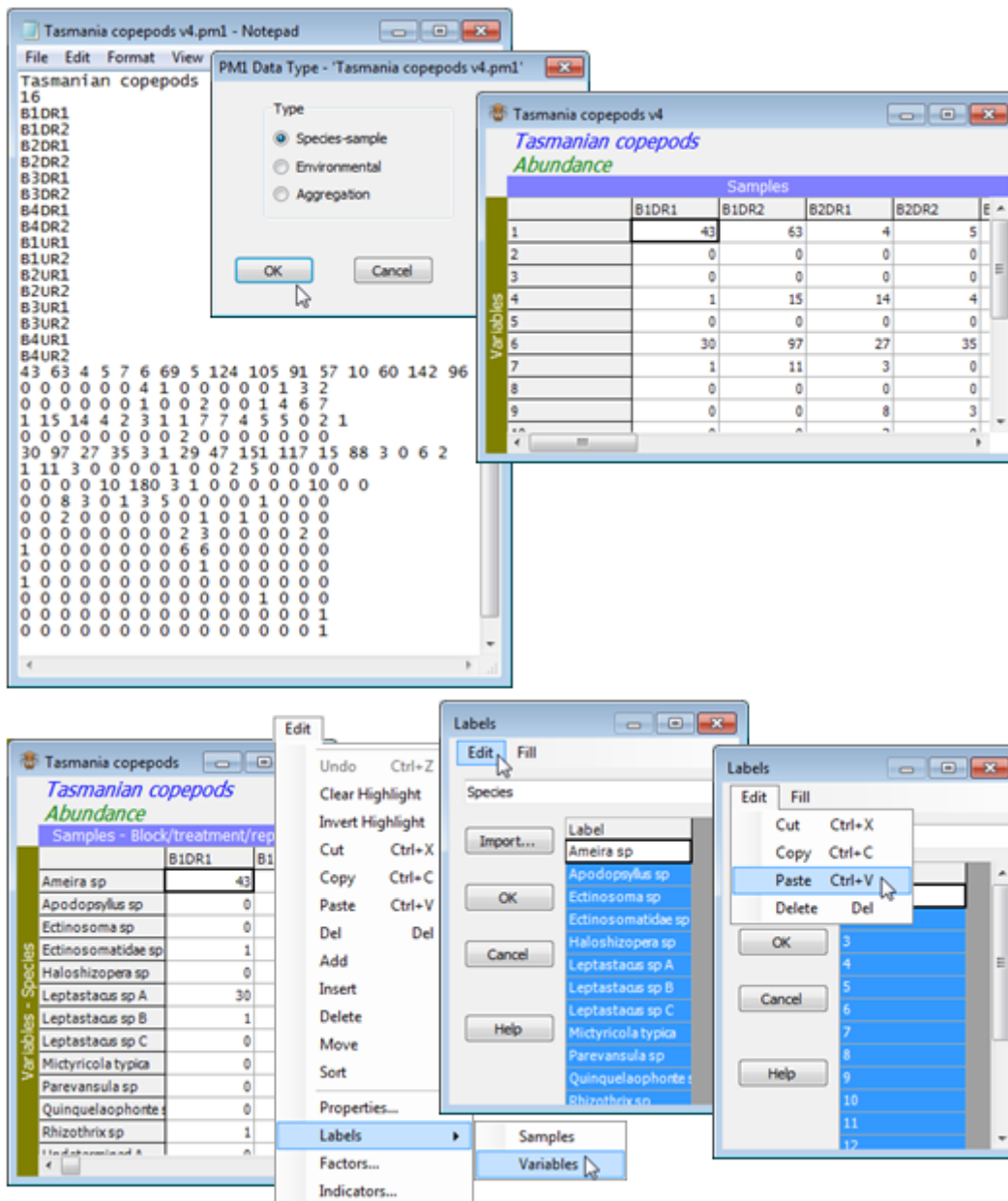


# Editing labels

Take **File>Open>**(Filename: **Tasmania copepods v4.pm1**)>**Type**•Species-sample to input this (archival) v4 format file, and note that the missing species labels could be copied and pasted from elsewhere (if they were available in the same order) – perhaps an external file or, as demonstrated below, from another worksheet within the workspace (**Tasmania copepods.pri**). All amendments to labels are implemented through **Edit>Labels>Variables** (or **Samples**), then clicking on the label header will highlight the full set of labels for copying out – or pasting into – their contents.



Save the current workspace in the C:\Examples v7\Tasmania meiofauna directory, with **File>Save Workspace As>**(File name: **Tasmania ws.pwk**), for use in the next and later sections.

Revision #1

Created 15 May 2024 22:57:30 by Arden

Updated 15 May 2024 23:02:11 by Arden