




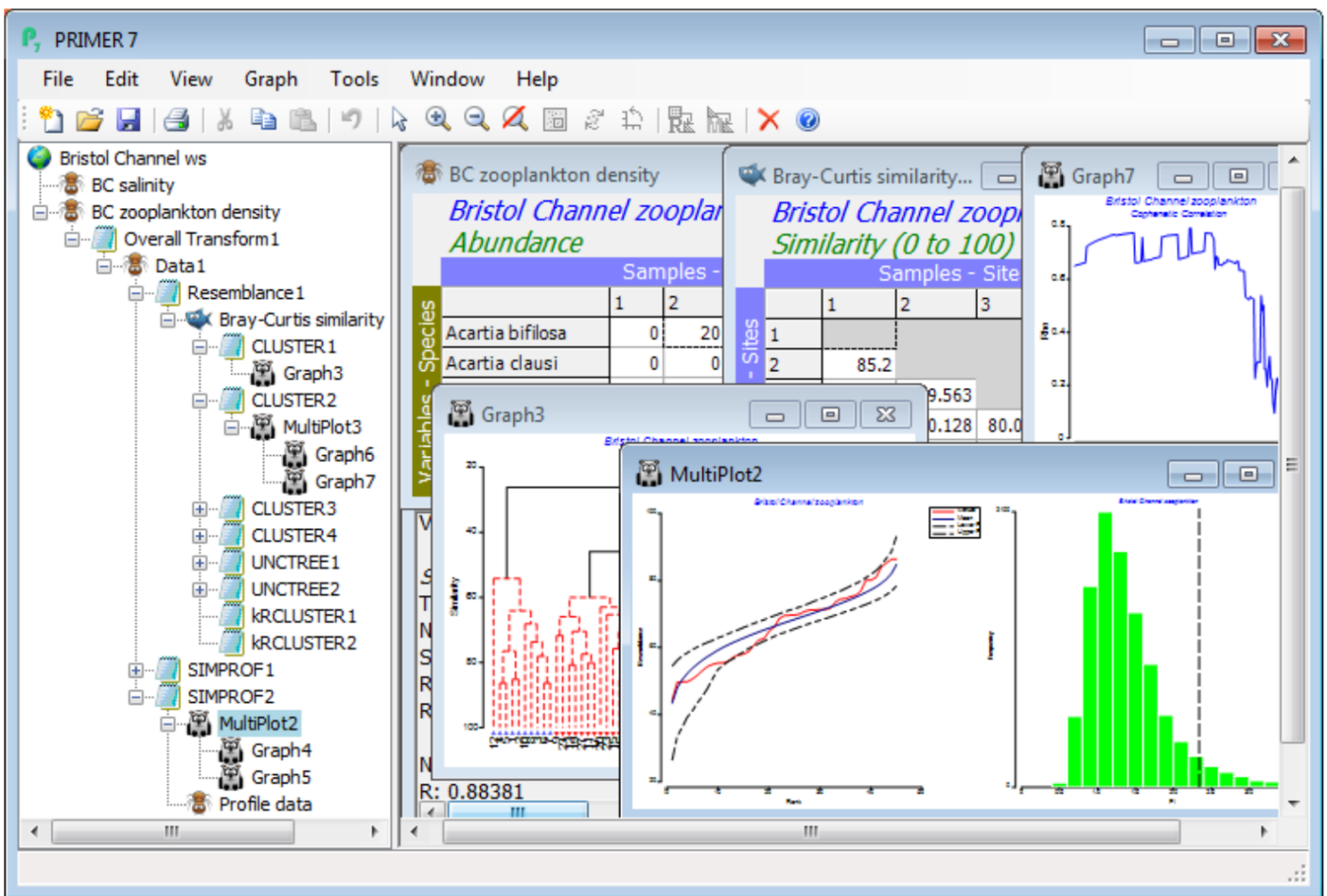


Explorer tree

It will have been obvious from performing the worked examples of the previous sections that the structure of all calculations in the current workspace is stored and displayed in logical fashion, on the left of the PRIMER desktop, in the *Explorer tree*. This lists data sheet names, and any derived constructions (such as further data sheets , resemblance matrices  or plot windows ) , via the intermediate Results windows  , which are simple text windows giving details of the options taken in moving down a branch from one sheet to an ensuing window, in addition to listing textual results of the operation. This allows the user to manage the workspace, finding and activating only windows which are needed, and saving the entire workspace structure in a single operation, and in a single file  , for later retrieval. For example, if you have been analysing the data of the previous section, the PRIMER desktop should now look something like:



Revision #5

Created 20 June 2024 22:40:23 by Arden

Updated 23 June 2024 21:45:19 by Arden