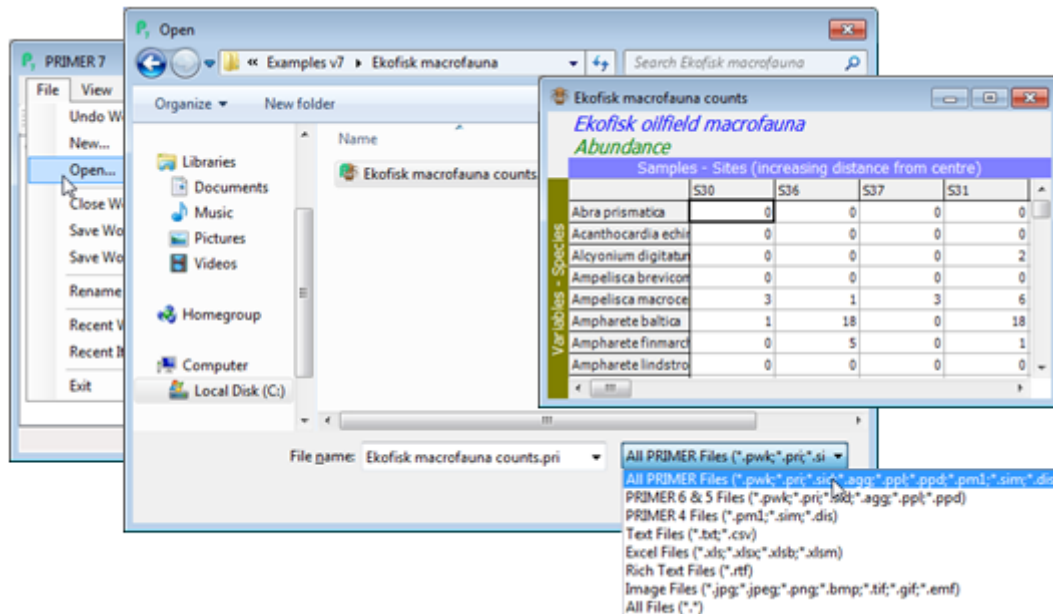


# Opening PRIMER files

**File>Open>**(File name: Ekofisk macrofauna counts.pri)>Open will read in the existing Ekofisk species-by-samples array. The default file types are any of the PRIMER 7 formats, though earlier formats (Windows PRIMER v6 & v5, DOS v4), text and Excel files (commonly used for initial data input) are available. These are listed in detail on the first page of this section (Section 1).



Revision #1

Created 15 May 2024 00:03:54 by Arden

Updated 15 May 2024 00:06:31 by Arden