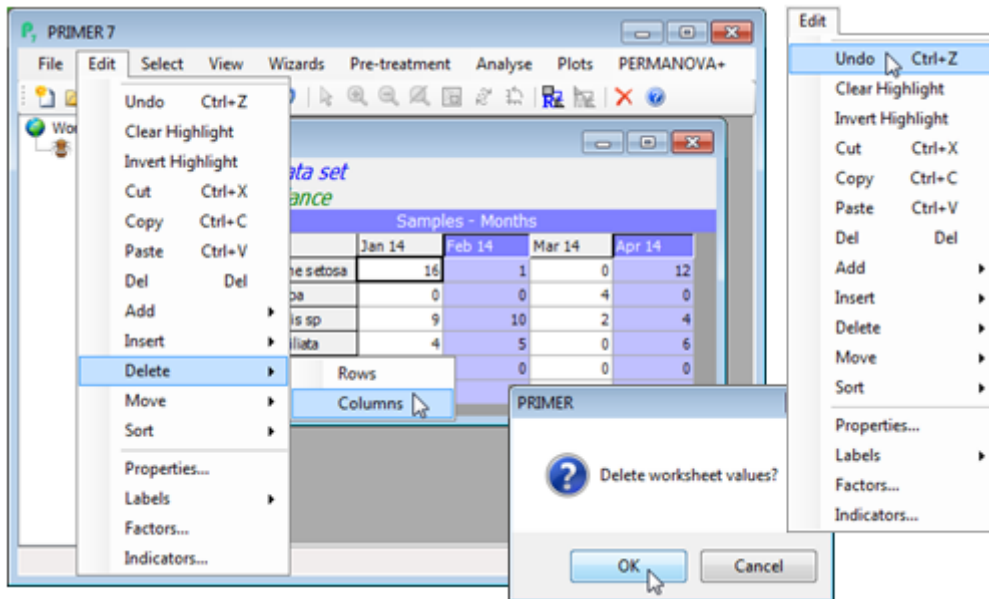


Undo data sheet edits

Occasionally, cell values are accidentally deleted or rows/columns added in unintended places but PRIMER 7 (unlike PRIMER 6) is able easily to back-track on such changes. There is a repeated **Edit>Undo** operation for all row and column manipulations on the **Edit** menu (between the **Cut** and **Sort** items). The **Undo** extends to any typing directly into cells of the data sheet or to copying and pasting rows/columns into it, whether from the same sheet or externally, from the clipboard.



Revision #1

Created 14 May 2024 23:21:25 by Arden

Updated 14 May 2024 23:24:54 by Arden