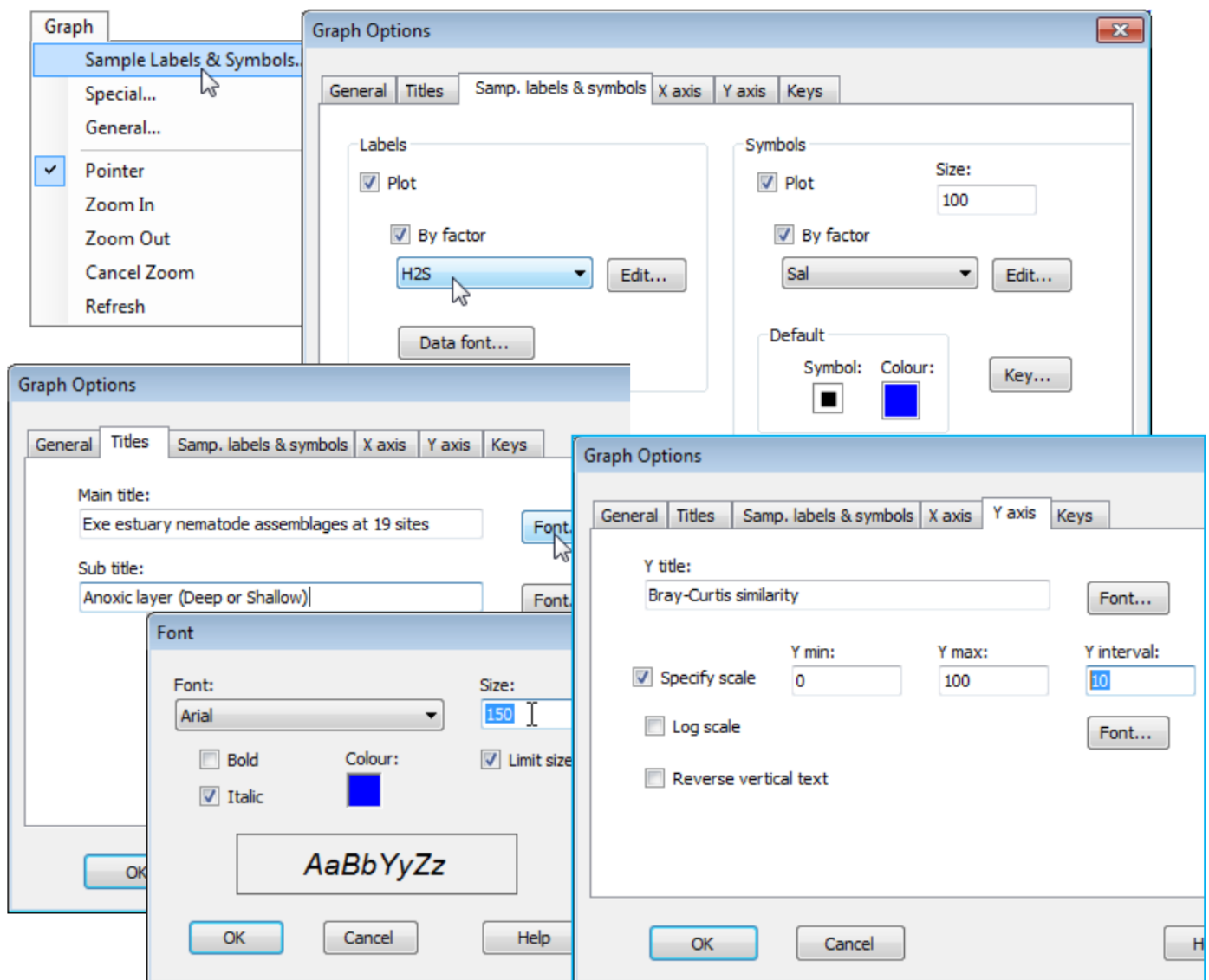


# Editing plot titles & scales

Still in the Graph Options dialog box, take the **Titles** tab and edit the main and sub-title content as shown below, also altering title font sizes and types: (Main title:**Font**>**Size:150**) & (Sub title:**Font**>Colour:[choose black] & [Italic check box off]). From the **Y axis** tab, change title: (Y title: **Bray-Curtis similarity**), also respecifying the y axis scale by (✓Specify scale)>(Y interval:**10**). On the **X axis** tab, take (✓Reverse vertical text).



Revision #1

Created 13 June 2024 03:46:49 by Arden

Updated 13 June 2024 03:53:17 by Arden