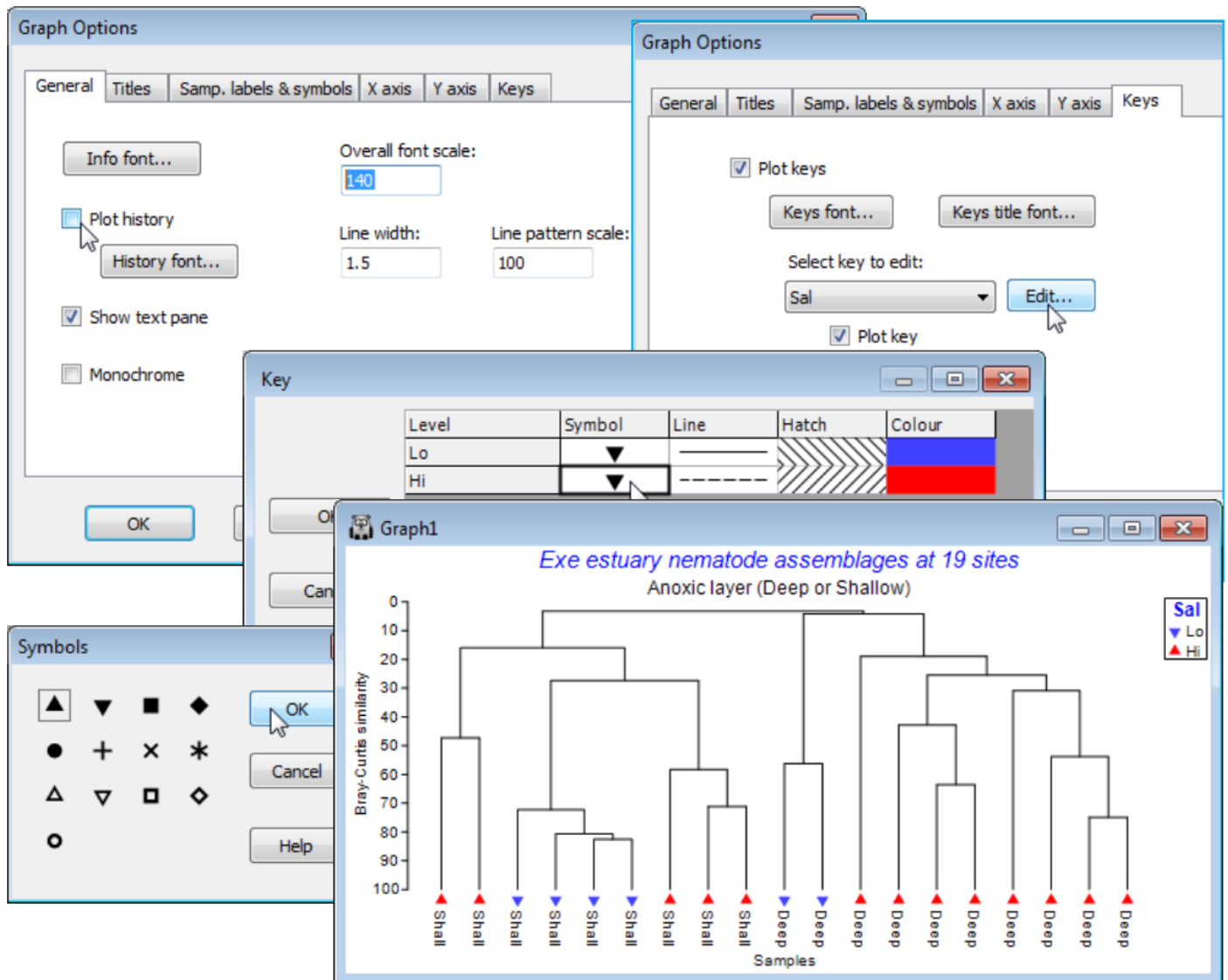


General menu/tab & Keys tab

Finally, on the **General** tab (also reached directly from **Graph>General**), thicken up all lines with (Line width: 1.5), increase the size of all fonts with (Overall font scale: 140), remove the display of the calculation history (transformation, similarity measure etc.) by unchecking (Plot history). On the **Keys** tab, take **Keys title font** to make the factor title ✓ Bold, and **Edit** to obtain the Key dialog and reverse the upward and downward triangle symbols for this salinity factor (so Lo points down!).



Revision #2

Created 13 June 2024 03:54:06 by Arden

Updated 21 January 2025 22:34:27 by Abby Miller