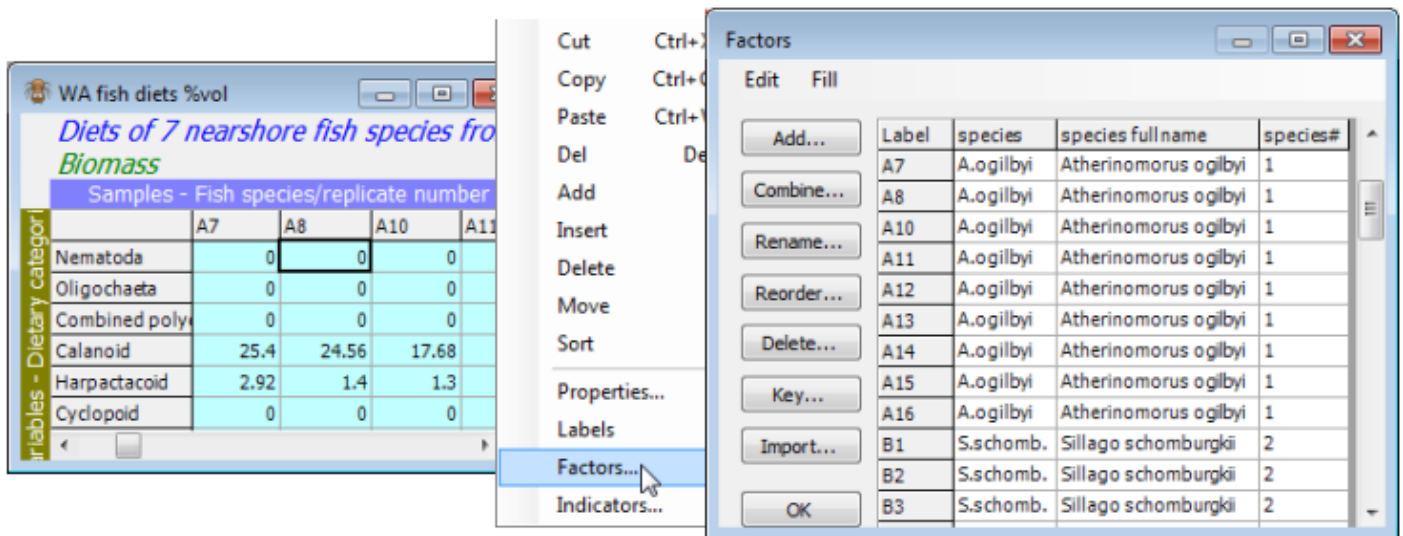



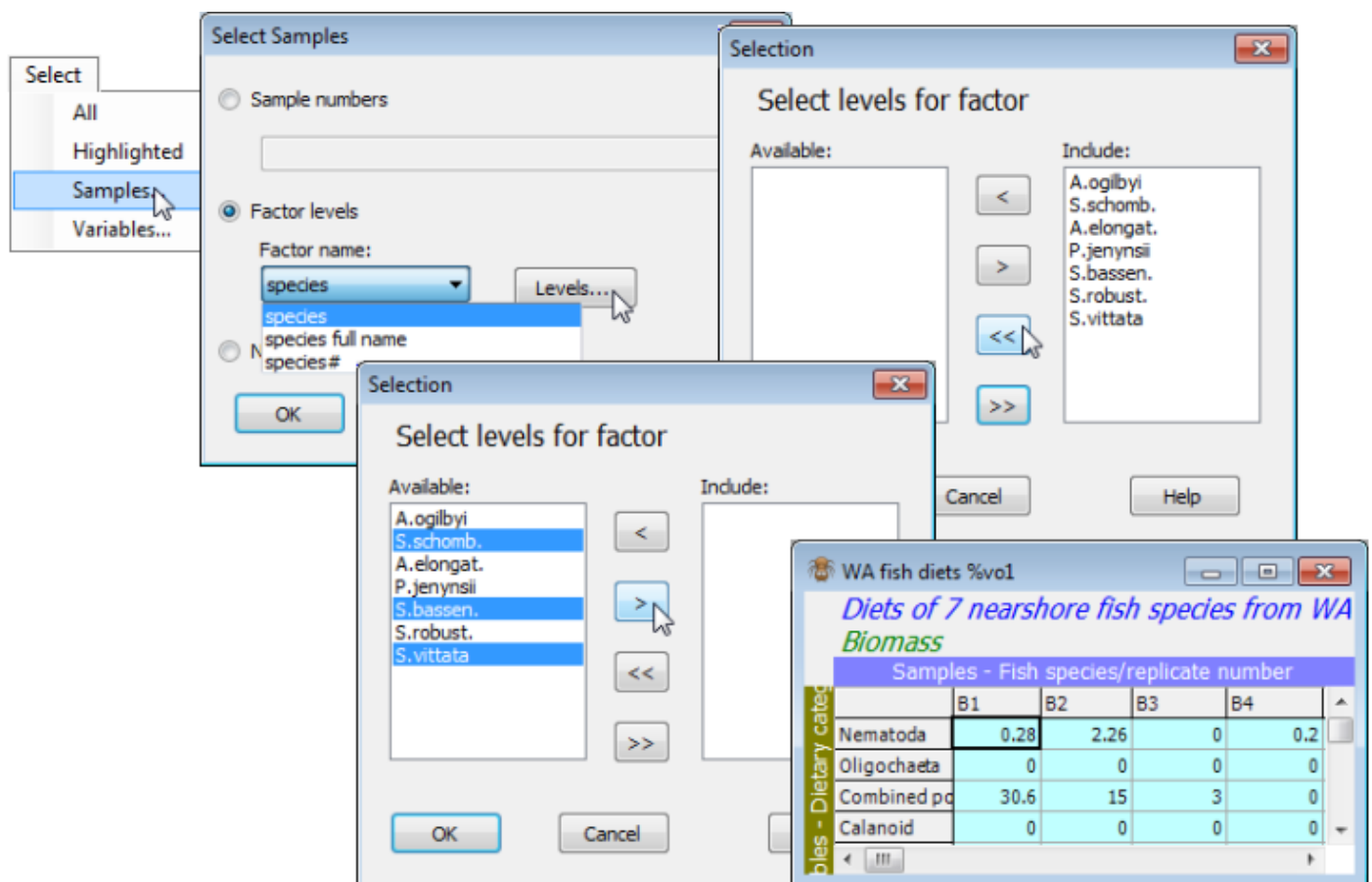


# Selecting by factor levels

The highlighting route to selection can be bypassed altogether using the other options on the **Select** main menu, **Select>Samples** and **Select>Variables** (and an example of the latter was seen in the previous section). Here, to select only those samples from the three congeneric *Sillago* predator fish species (labels starting B, E or G), it would be neater to use the factors that have already been set up to identify these different levels: S.schomb., S.bassen., S.vittata from the factor **species**, or the non-abbreviated **species full name** factor, or equally, 2, 5 and 7 from the numeric factor **species#**.



From the **WA fish diets %vol** datasheet, take **Select>Samples>•Factor levels>(Factor name: species)>Levels**, giving a standard Selection window, with boxes listing levels to Include, and those Available but not included. Move back all items to the Available list with , then using the  button move back the desired levels: S.schomb., S.bassen., S.vittata to the Include list. This can be either singly, or all of them can be highlighted with Ctrl clicks (a range would use Shift click), in the usual Windows manner, and then all taken across to the Include box with .



Revision #2

Created 20 May 2024 00:10:25 by Arden

Updated 14 January 2025 22:27:00 by Abby Miller