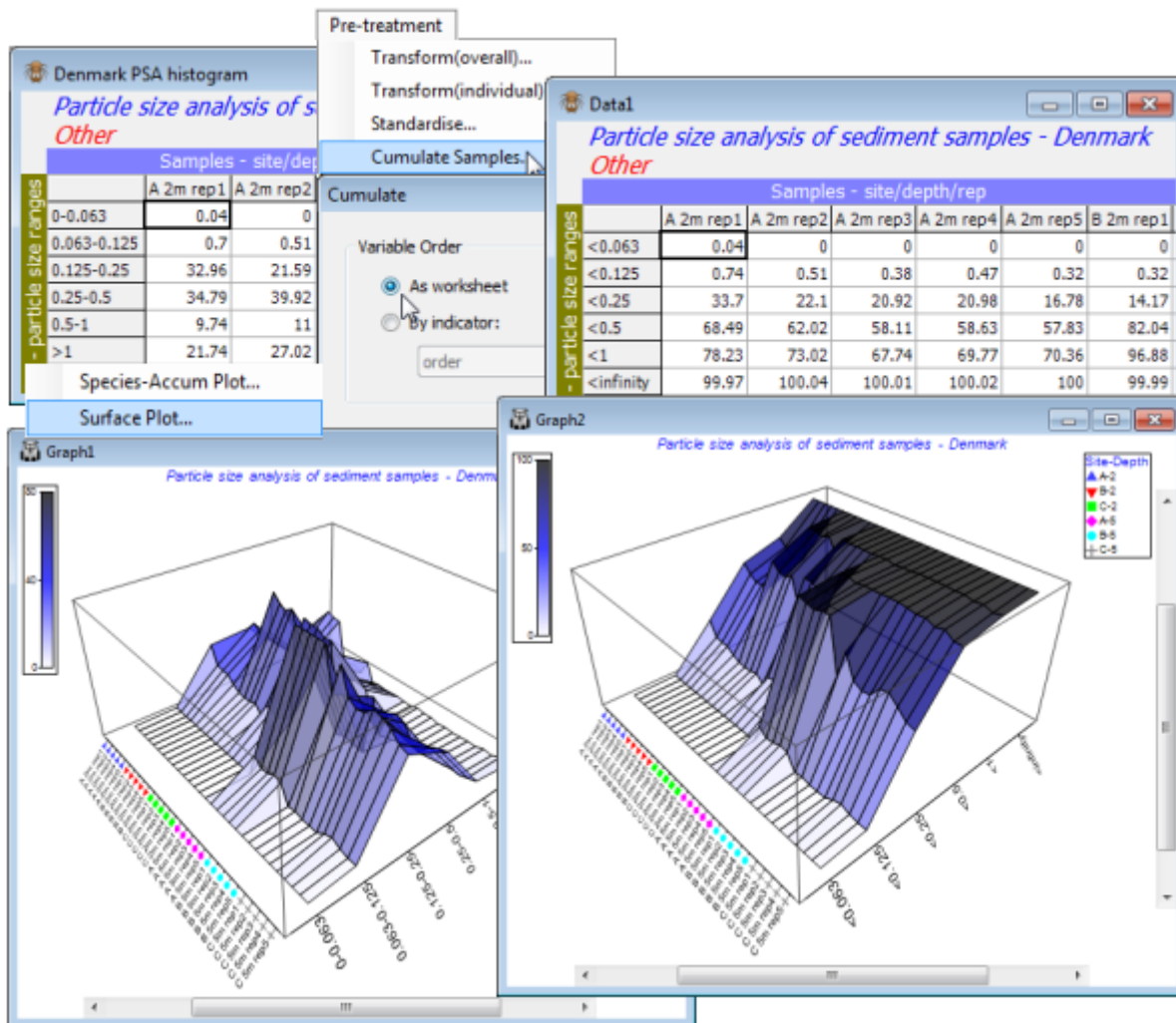


# Surface plots

The smoothing effect can best be seen by **Plots>Surface Plot** of both **Data1** and **Data2** sheets – a further graph type new to PRIMER 7, but which should be reserved only for cases such as this, where there is genuine ordering of the variables. Symbols can be added to the sample axis with **Graph>Sample Labels & Symbols**, and colour shading introduced (as it could have been with the above Shade Plots) by **Graph>Special>Key**. Save the workspace as **Denmark ws** for use later.



Revision #2

Created 22 May 2024 01:29:50 by Arden

Updated 15 January 2025 00:53:30 by Abby Miller